



BASALT I

design marble & stones

Workbook



**WE SHAPE  
YOUR WISHES**

CP Basalti Has been operating in the field of marble and stone processing since 1985.

Thanks to our thirty-year experience we are able to find the ideal solution for every need, in terms of style and functionality, with a wide range of different processes and materials.

We work different materials such as marble, basalt, granite, trachyte and our exclusive enamel basalt.



# WHAT DO WE DO

In the next pages, some  
examples of our works



FLOORS



COATINGS



STAIRS



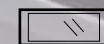
KITCHENS



BATHROOMS



FURNISHINGS AND  
DECORATIONS



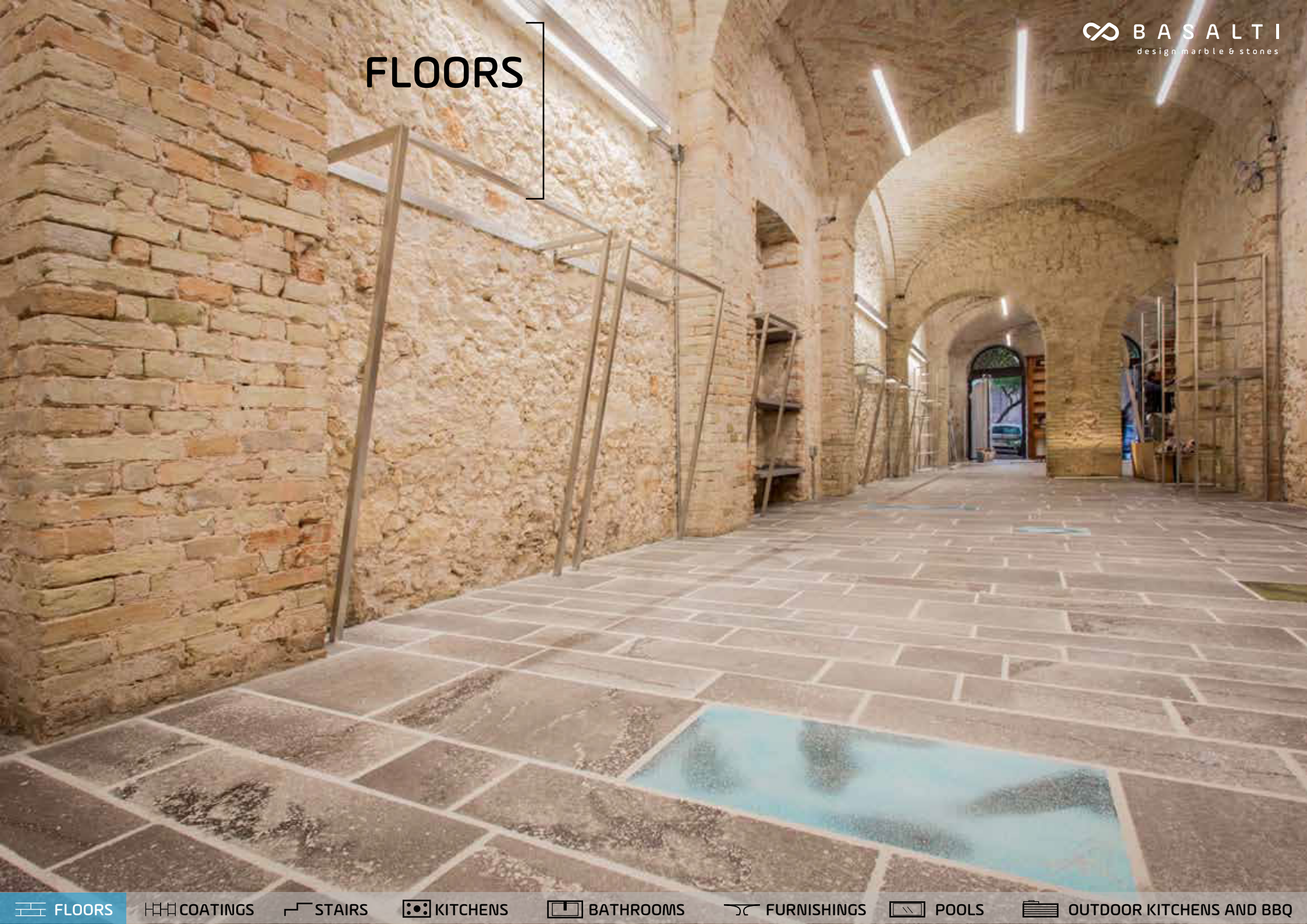
POOLS



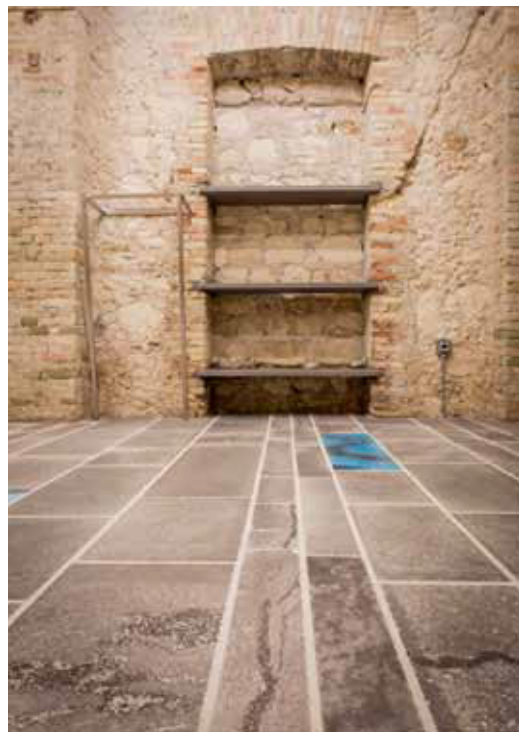
OUTDOOR KITCHENS  
AND BARBECUE



# FLOORS







In this interior flooring we have matched the natural basalt with enameled basalt in different colors.







For these outdoor floors we used a porous basalt with hand-finished edges.















Floor made from a combination of natural basalt and enamelled basalt inserts. This type of processing is available in different formats and different colors can be used.







This is a work of our conception, which ages the marble, amplifies the color and emphasizes the veins. The chosen format recalls that of antique parquet. In the photo below a detail of a slab of finished with a subject reminiscent of those found in traditional Sardinian carpets.











In this floor we have combined three materials, basalt marble and trachyte. The result is of great visual impact.













# COATINGS





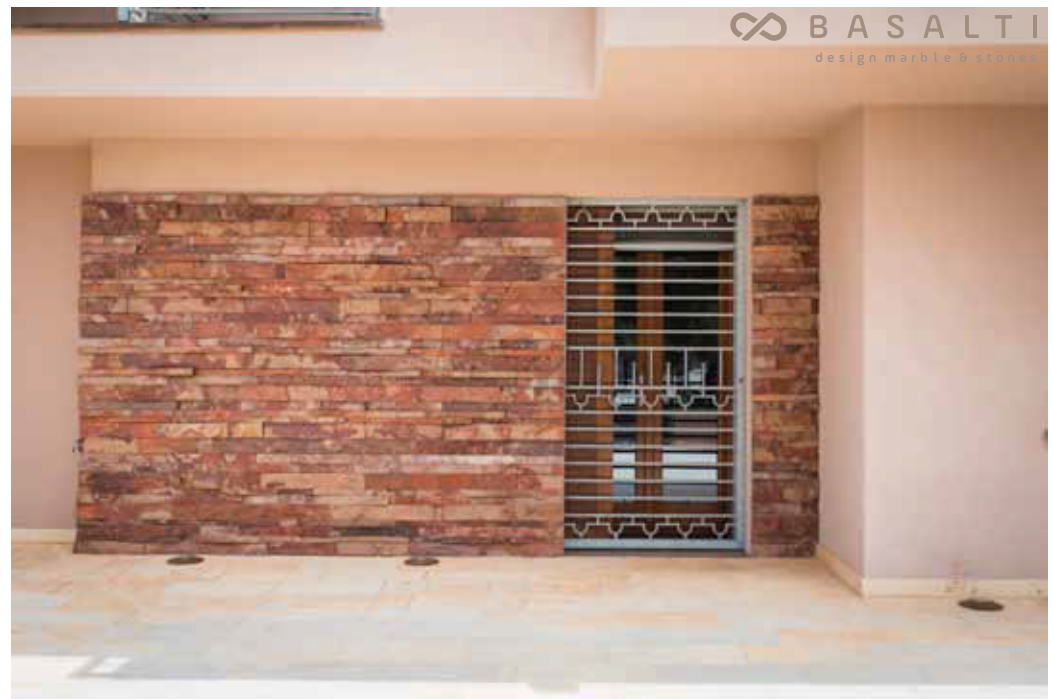
The exterior of this house has been covered with basalt and marble playing on the color contrast but using the same format for both.







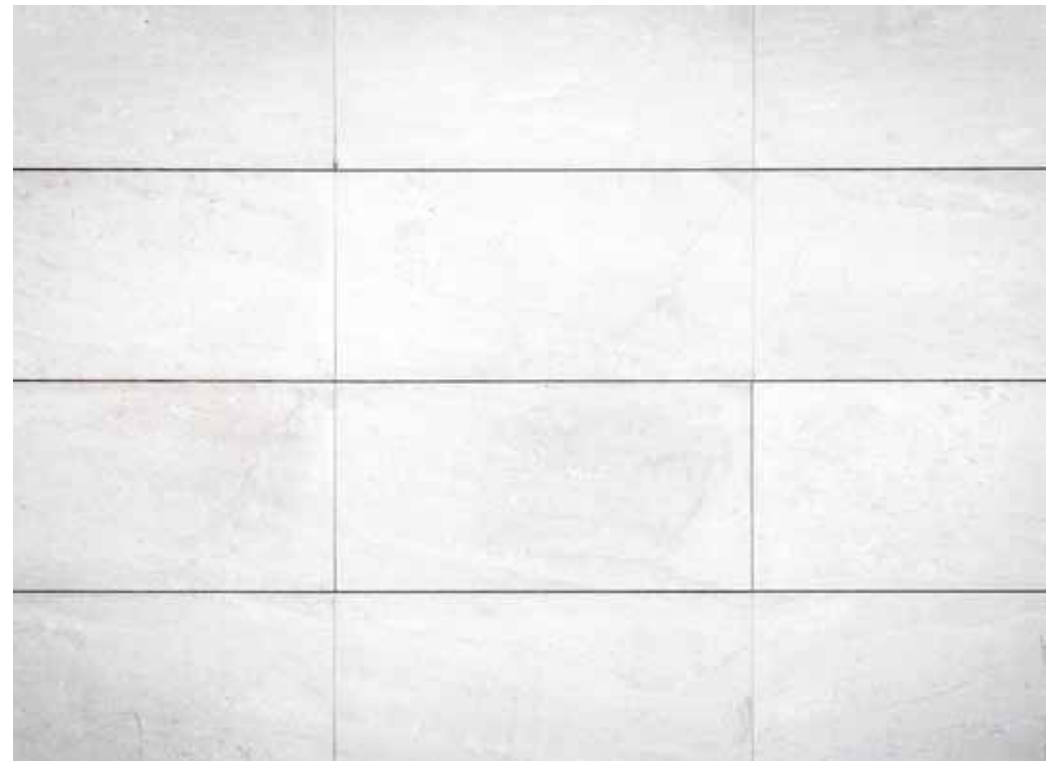
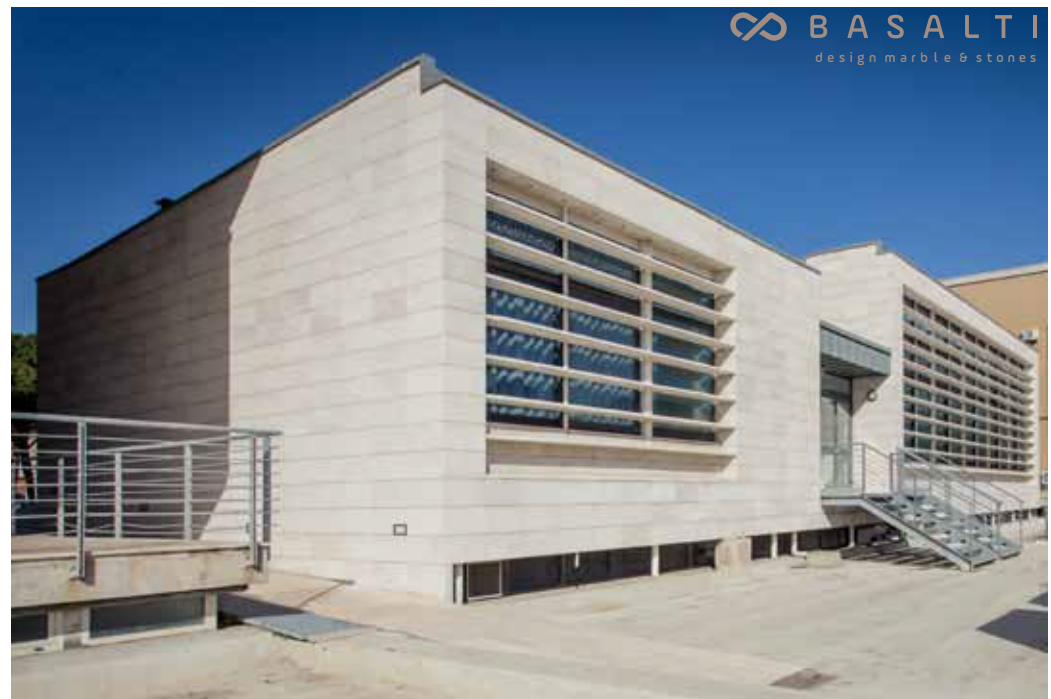




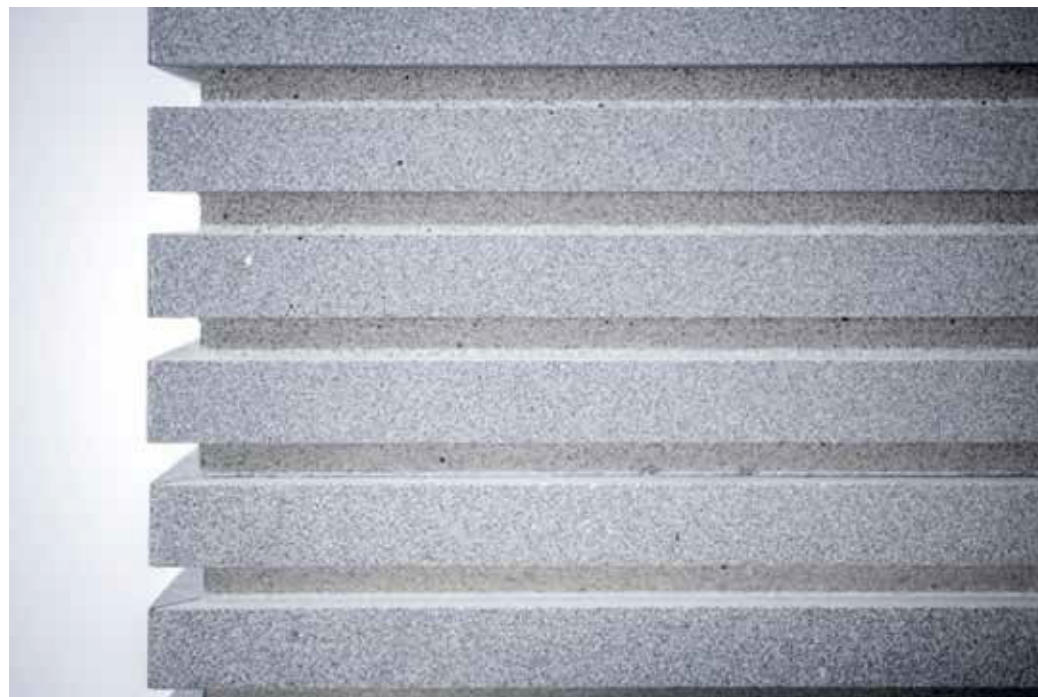
















Another exclusive work of ours: this bathroom has been covered and paved in enamelled basalt using different shades of blue and light blue. The same enamelling was used for the shower tray.





# STAIRS





Stair made of dark basalt, the valuable detail is that raising and tread of each step are made in one piece not assembled.











Stair made of antiqued marble, also in this case with a process of our invention. In some of the risers the steps have decorative incisions as can be seen in the picture below.











This external stair is made of marble. To realize it we used two different formats, one regular (for the steps) and the rest was made of opus incertum, this solution gives a lot of flexibility for the installation because it adapts to the ground.





# KITCHENS

Our experience gained in over thirty years of business allows us to work many materials and to realize various finishes that can satisfy the most diverse needs and can allow us to wander through all the styles.





In this kitchen we have created all the basalt surfaces, the color and the compactness of this material, together with the chosen working style, give a modern identity to this environment.











For the realization of this modern style kitchen we used a light gray basalt.







In this ambiente we have created the top kitchen, with the relative wall covering, the island and the sink all in marble, the washbasin was made from a single block.







The top of this kitchen was made of basalt, we chose a type of very dark material, in the photo on the right a detail of the joints between the different plates that compose it.







The top and the peninsula of this kitchen are made of light marble, the floor is made of antiqued marble with a process of our design and the chosen format recalls that of a parquet.







# BATHROOMS

Our experience gained in over thirty years of business allows us to work a lot of materials and make various finishes that can satisfy the most diverse needs and can allow us to wander through all styles. One of our strengths are the achievements of pieces carved by sculpting the single block as in the case of the sink in the photo on the right.











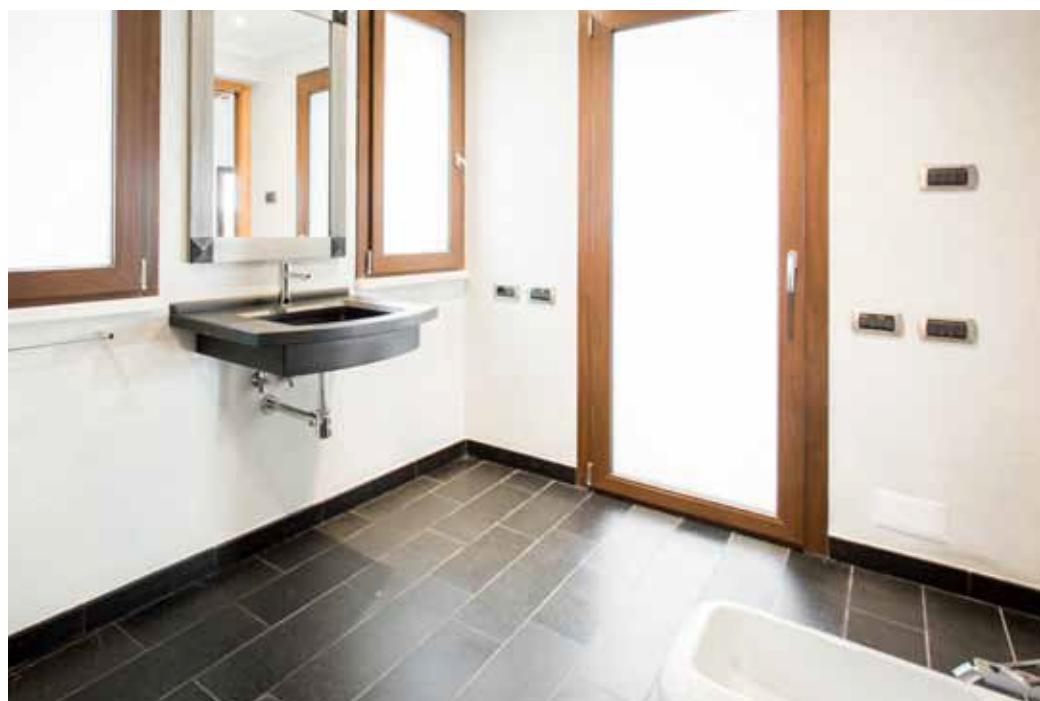
Washbasin made from a single block in dark basalt, in the photo on the right a detail of the interior.







Floor, wall tiles, shower tray and washbasin of this bathroom have been made of matt black enamelled basalt. Enamelled basalt is ideal for bathroom surfaces because it is easy to clean and very resistant.











The basin of this bathroom is made from a single block of Tyrrhenian marble, in the photo on the left and in the photo above a detail of the inside finishes.











The floor, the boiserie and the washbasins of this bathroom were made of yellow enameled basalt. In the photo above the sink made by sculpting the basalt from solid, in the photo on the right a photo of the whole where you can see that the upper part of the wall lining ends with geometric patterns obtained by basalt engraving and glazing with a different color.







In this bathroom, the floor covering, the washbasin and the shower tray have been made of Orosei marble with some basalt inserts.









# FURNISHINGS AND DECORATIONS

Thanks to our many years of experience in this field we are able to meet any need, even when it comes to furnishing accessories.





Bar counter made of matt black enamel basalt, in the photo on the left a detail of the decorative engraving.











In the two photos on the sides a separate covering made of matt enamelled basalt with decorative engravings. In the two photos below a marble table.







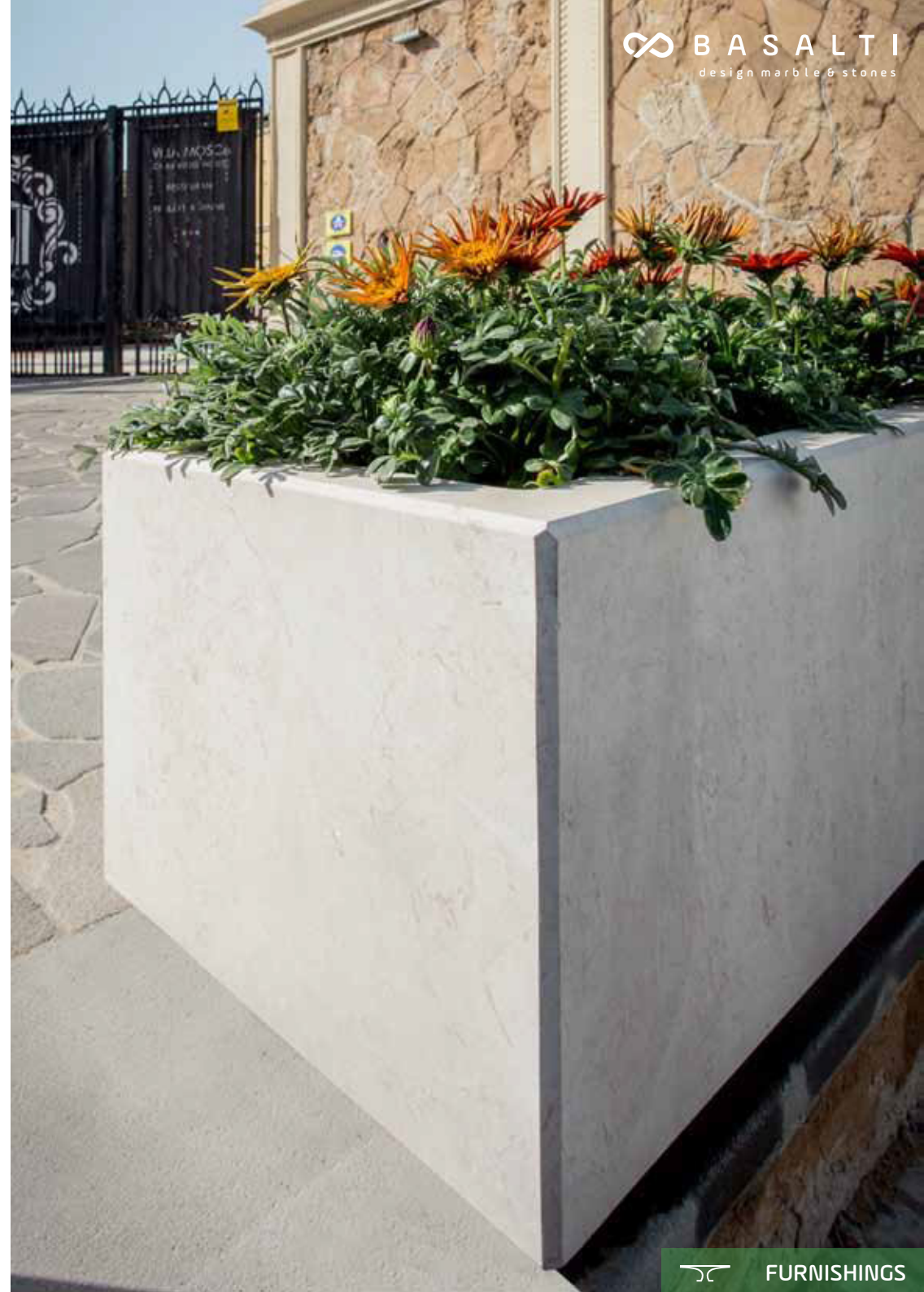
This wall made entirely of marble has a dual function, the technique of dividing two environments and the decorative one. The wall is self-supporting so it is not a wall covering but a real 6cm thick marble wall, the facade is decorated with inserts that remind the waves of the sea.







Planter made from a single block of Orosei marble with decorative engravings.











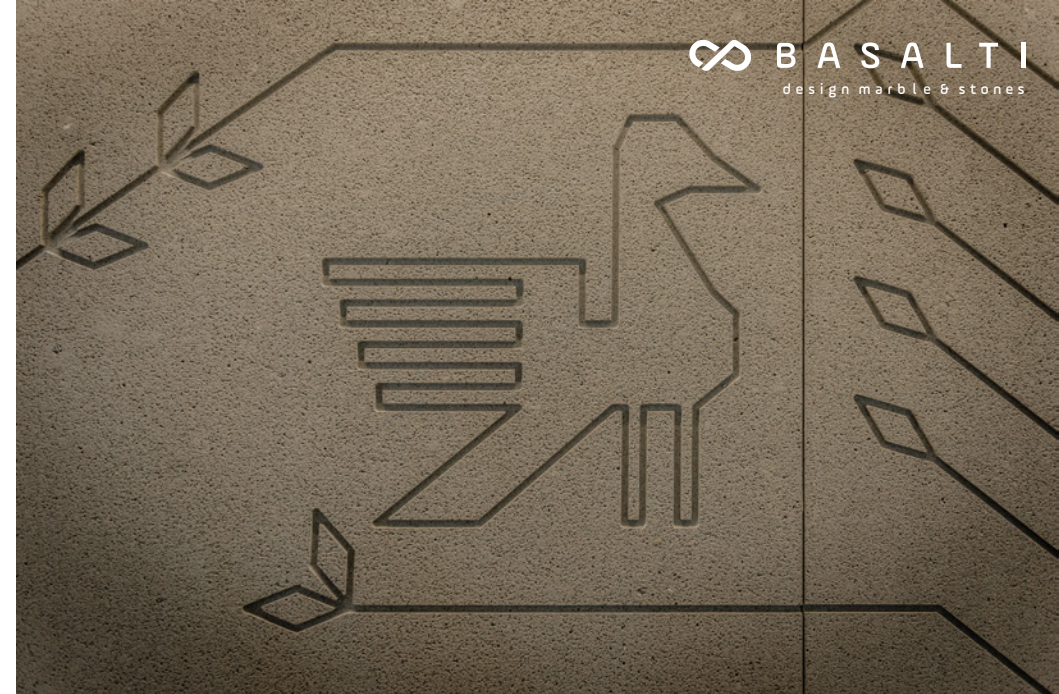












BASALTI  
design marble & stones



FURNISHINGS







# POOLS



























Pool edge in Orosei marble, made by assembling curved pieces to accommodate the sinuous shape of this large pool.















# OUTDOOR KITCHENS AND BARBECUE





These outdoor furnishing solutions as well as enhancing all the spaces of the house are ideal in terms of practicality of use. To make them we used different materials but in general the marble granite and basalt are very resistant stones and therefore, in addition to an aesthetic yield, they also have a technical yield.







In the pictures on the left and on the right there is an external sink with a work surface and a BBQ setup entirely made of basalt.







An external sink, with work surface and relative BBQ. entirely made of marble. In the picture on the left you can see that the flooring was made of the same material.

